

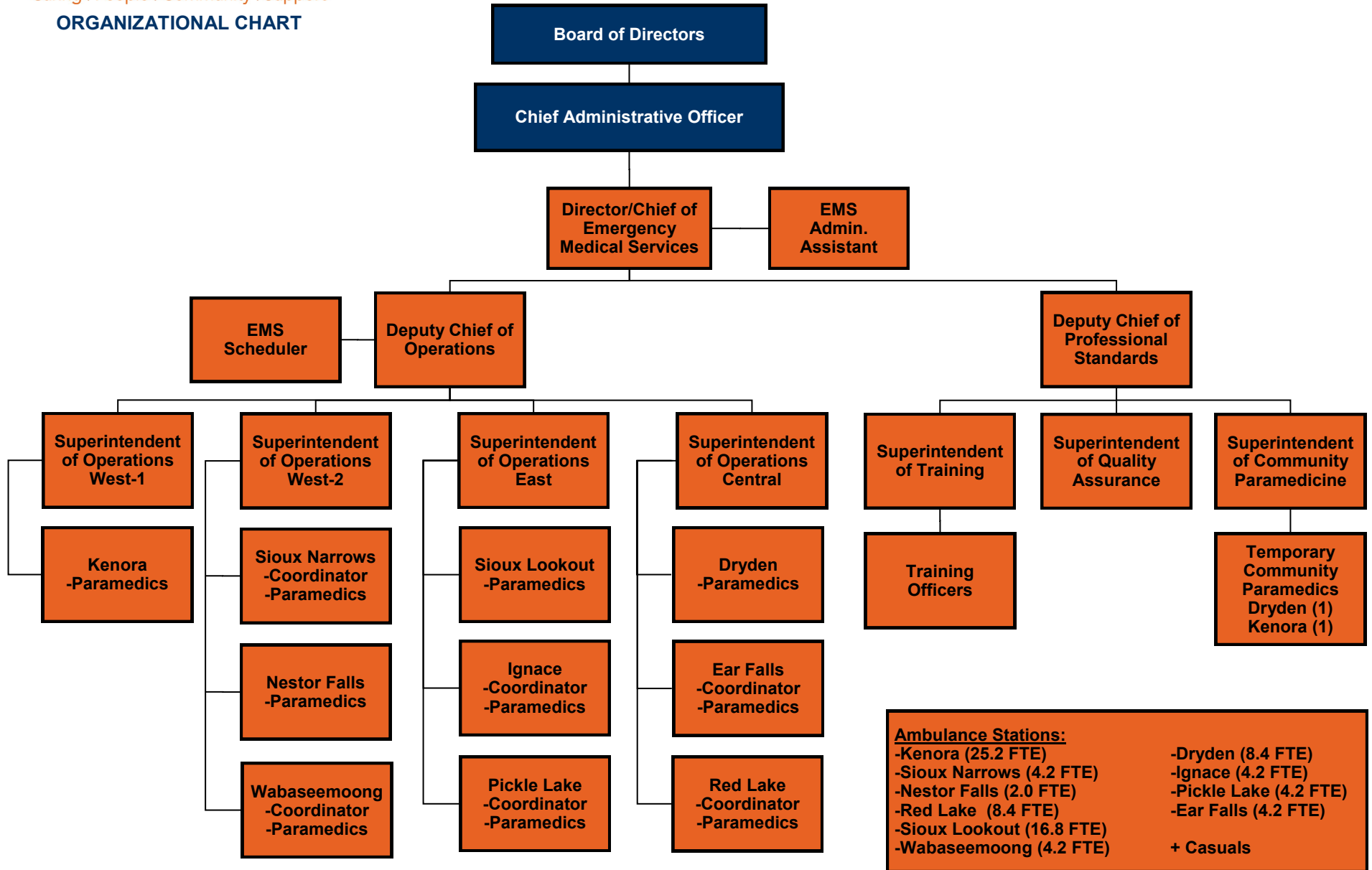


KENORA DISTRICT SERVICES BOARD

Caring | People | Community | Support

**ORGANIZATIONAL CHART**

**Emergency Medical Services**



<b>Ambulance Stations:</b>	
-Kenora (25.2 FTE)	-Dryden (8.4 FTE)
-Sioux Narrows (4.2 FTE)	-Ignace (4.2 FTE)
-Nestor Falls (2.0 FTE)	-Pickle Lake (4.2 FTE)
-Red Lake (8.4 FTE)	-Ear Falls (4.2 FTE)
-Sioux Lookout (16.8 FTE)	+ Casuals
-Wabaseemoong (4.2 FTE)	

