

**PROJECT PROFILE – PINE STREET & POPLAR
AVENUE, EAR FALLS**

Owner of Project	Kenora District Services Board (KDSB) – Housing Services
Project Name	Pine & Poplar
Location/ Address	3, 5, 7, 9, 11 & 13 Poplar Avenue 23, 25, 27, 29, 31, 33, 35, 37, 39, 41, 43, 45, 47 & 49 Pine Street, Ear Falls. ON P0V 1T0
Number of Units	20 (4 – 2 bedroom & 16 – 3 bedroom)
Date constructed	1967
Building Type	1 & 2 Storey – Semi - detached
Tenant Type	Family / Rent-geared-to-income
Market Units	N/A
Modified Units	N/A
Supports	N/A
Assistive Items	N/A
Elevator/Elevator lift	N/A
Heat Type (Suites)	Natural gas forced-air furnace or Hydronic forced-air heating, complete with heat recovery ventilator (HRV)
Heat (Tenant or landlord)	Tenant
Cooling (Suites)	N/A
Electric (Tenant or Landlord)	Tenant
Electric Service Provider	Hydro One
Natural Gas Service Provider	Union Gas
Water (Tenant or landlord)	Tenant
Water Source (Municipal or Well)	Municipal – Town of Ear Falls
Sanitary Sewer (Municipal or Septic)	Municipal – Town of Ear Falls
Television / Internet (Tenant or Landlord)	Tenant – Shaw & Bell
Police	Ontario Provincial Police Services
Fire	Town of Ear Falls
Fire Protection	Smoke alarms in units
Ambulance	Northwest EMS
Fridge and Stove	Supplied by tenant
Laundry	Hook-ups in units, tenant supplied machines
Garbage & Recycle (Pick up or bins)	Municipal curb side pick up
Parking (included or not included)	Single lane gravel drive provided for each unit.
Geographic Area	District of Kenora

Exterior Photograph



Typical 3 Bedroom Floor Plan

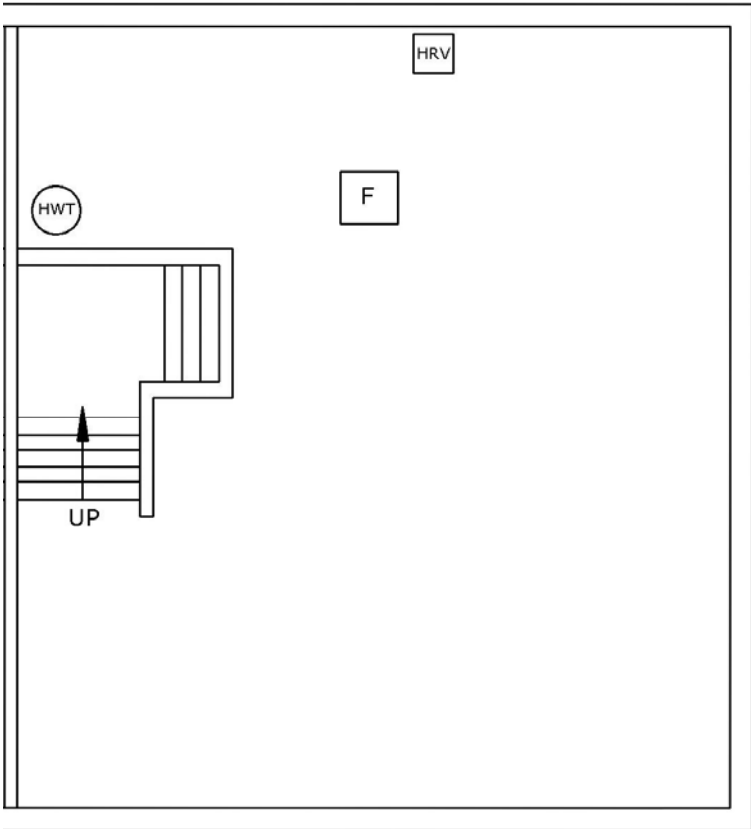


Figure 1 - Typical Basement

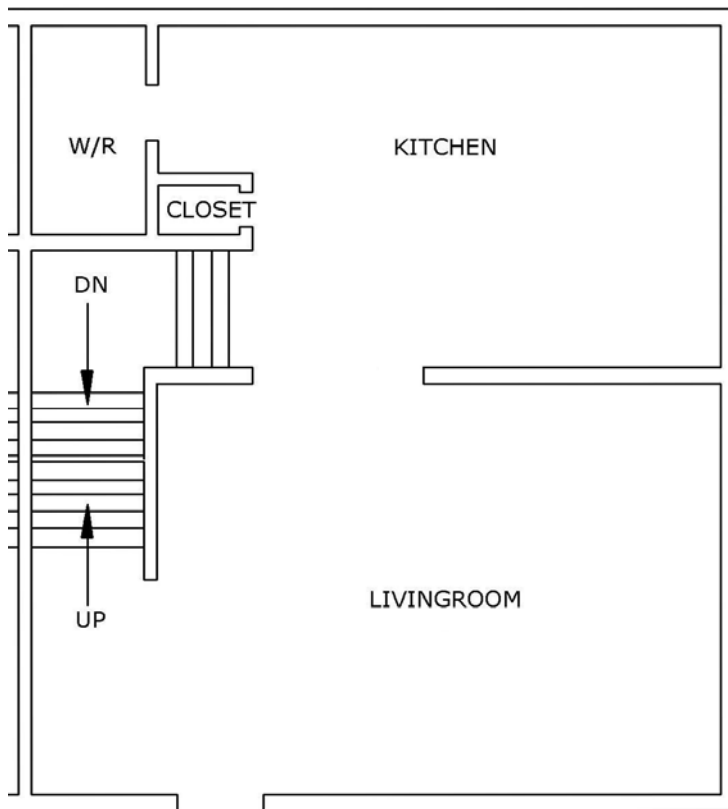


Figure 2 - Typical Main Floor

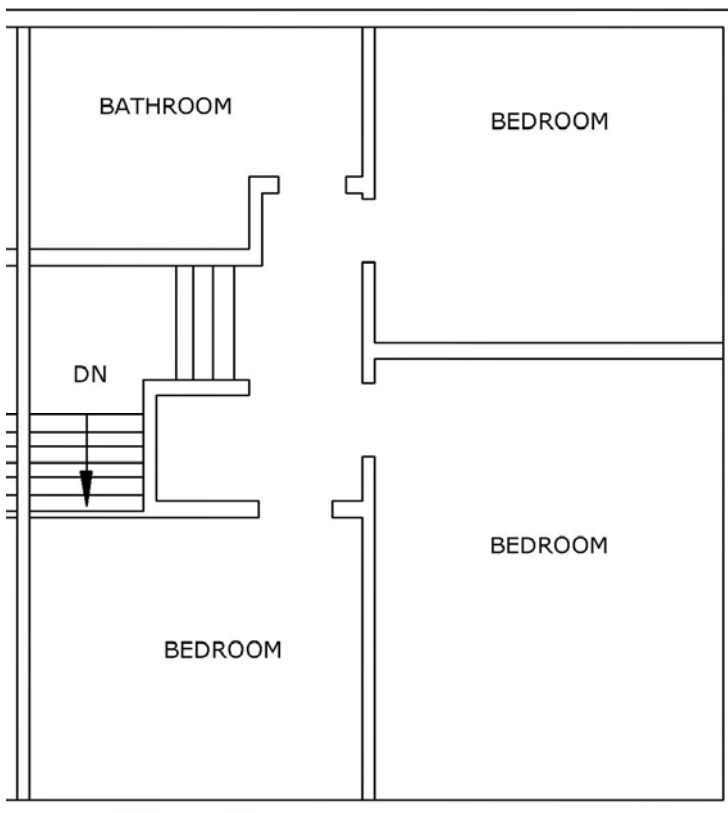


Figure 3 - Typical Second Floor