

PROJECT PROFILE – MINTO AVE & BAY, KENORA

Owner of Project	Kenora District Services Board (KDSB) – Housing Services
Project Name	Minto
Location/ Address	1151-1181, 1209, 1211, 1233-1236 Minto Avenue & 306 to 309 Minto Bay Kenora, ON P9N 1B2
Number of Units	36 (12 – 2 bedroom, 20 – 3 bedroom & 4 – 4 bedroom)
Date constructed	1973
Building Type	2 Storey - Row Housing & Semi – detached
Tenant Type	Family / Rent-geared-to-income
Market Units	No
Modified Units	No
Supports	Minto Resource Centre (Best Start HUB - Unit 26 - 1181)
Assistive Items	Programs and services are provided to families to support children in their early years. Helps find other services in community Food supports - Community Kitchen Canada Prenatal Nutrition Program Laundry \$\$ Toys & materials for children Community Partner Programs
Elevator/Elevator lift	N/A
Heat Type (Suites)	Natural gas forced-air furnace or Hydronic forced-air heating, complete with heat recovery ventilator (HRV)
Heat (Tenant or landlord)	Tenant
Cooling (Suites)	N/A
Electric (Tenant or Landlord)	Tenant
Electric Service Provider	Kenora Hydro Electric Corporation
Natural Gas Service Provider	Union Gas
Water (Tenant or landlord)	Tenant
Water Source (Municipal or Well)	Municipal – City of Kenora
Sanitary Sewer (Municipal or Septic)	Municipal – City of Kenora
Television / Internet (Tenant or Landlord)	Tenant – Shaw & KMTS
Police	Ontario Provincial Police Services
Fire	Kenora Fire Services
Fire Protection	Smoke alarms in units
Ambulance	Northwest EMS
Fridge and Stove	Supplied by tenant
Laundry	Hook-ups in units, tenant supplied machines
Garbage & Recycle (Pick up or bins)	Bins in centrally located garbage enclosure
Parking (included or not included)	Parking included (at additional cost), equipped with block heater outlet.
Geographic Area	Kenora, ON

Exterior Photographs



Figure 1 - 1181 Minto Avenue Row Housing



Figure 2 - 1161 Minto Avenue Row Housing

Typical 3 Bedroom Floor Plan

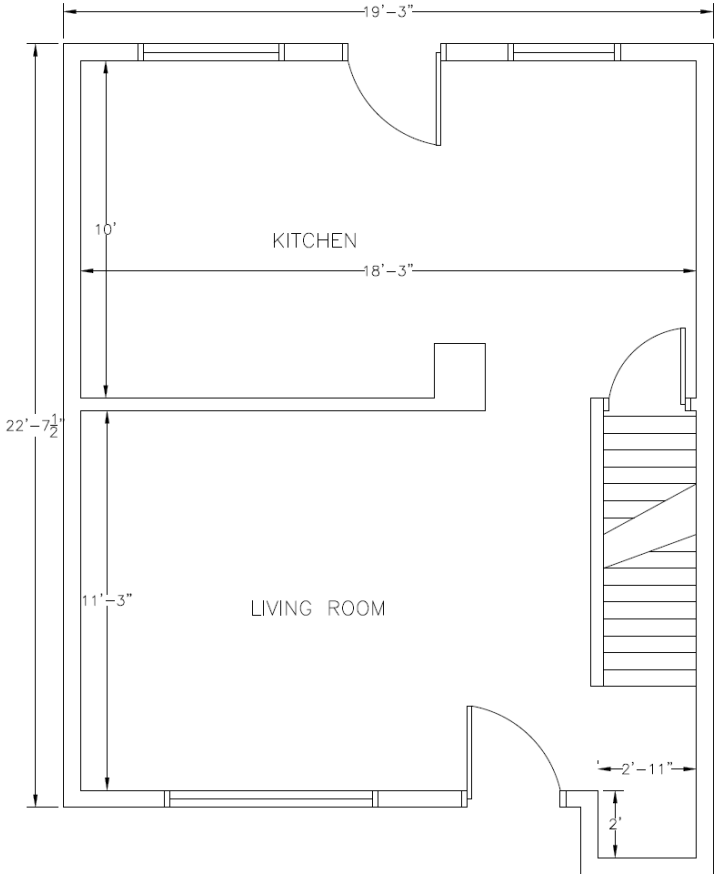


Figure 3 - Main Floor

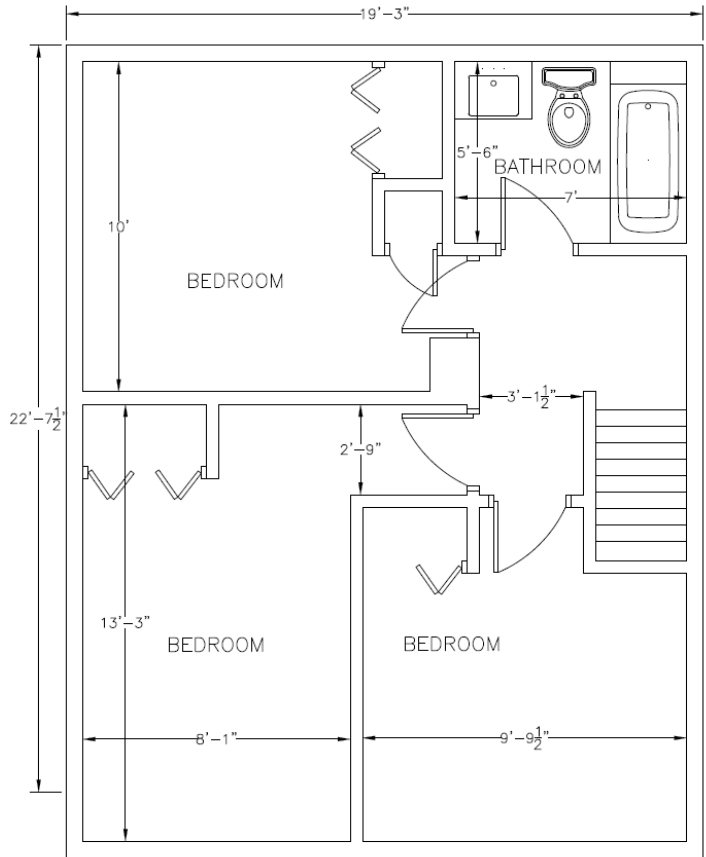


Figure 4 - Second Floor