

PROJECT PROFILE – HEENAN PLACE, KENORA

Owner of Project	Kenora District Services Board (KDSB) – Housing Services
Project Name	Heenan Place
Location/ Address	1211, 1212, 1213, 1214, 1215, 1216, 1217, 1218, 1220, 1222, 1224, 1226, 1228 & 1230 Heenan Place, Kenora
Number of Units	14 units (2 – 2 bedrooms, 8 – 3 bedroom & 4 – 4 bedroom)
Date constructed	1968
Building Type	1 & 2 Storey – Semi-detached
Tenant Type	Family / Rent-gearred-to-income
Market Units	N/A
Modified Units	N/A
Supports	Minto Resource Centre (Best Start HUB - Unit 26 – 1181 Minto Avenue)
Assistive Items	Programs and services are provided to families to support children in their early years. Helps find other services in community Food supports - Community Kitchen Canada Prenatal Nutrition Program Laundry \$\$ Toys & materials for children Community Partner Programs
Elevator/Elevator lift	N/A
Heat Type (Suites)	Natural gas forced-air furnace or Hydronic forced-air heating, complete with heat recovery ventilator (HRV)
Heat (Tenant or landlord)	Tenant
Cooling (Suites)	N/A
Electric (Tenant or Landlord)	Tenant
Electric Service Provider	Kenora Hydro Electric Corporation
Natural Gas Service Provider	Union Gas
Water (Tenant or landlord)	Tenant
Water Source (Municipal or Well)	Municipal – City of Kenora
Sanitary Sewer (Municipal or Septic)	Municipal – City of Kenora
Television / Internet (Tenant or Landlord)	Tenant – Shaw & KMTS
Police	Ontario Provincial Police Services
Fire	Kenora Fire Services
Fire Protection	Smoke alarms in units
Ambulance	Northwest EMS
Fridge and Stove	Supplied by tenant
Laundry	Hook-ups in units, tenant supplied machines
Garbage & Recycle (Pick up or bins)	Municipal curb side pickup
Parking (included or not included)	Single drive asphalt parking included
Geographic Area	District of Kenora

Exterior Photograph



Typical 3 Bedroom Floor Plan

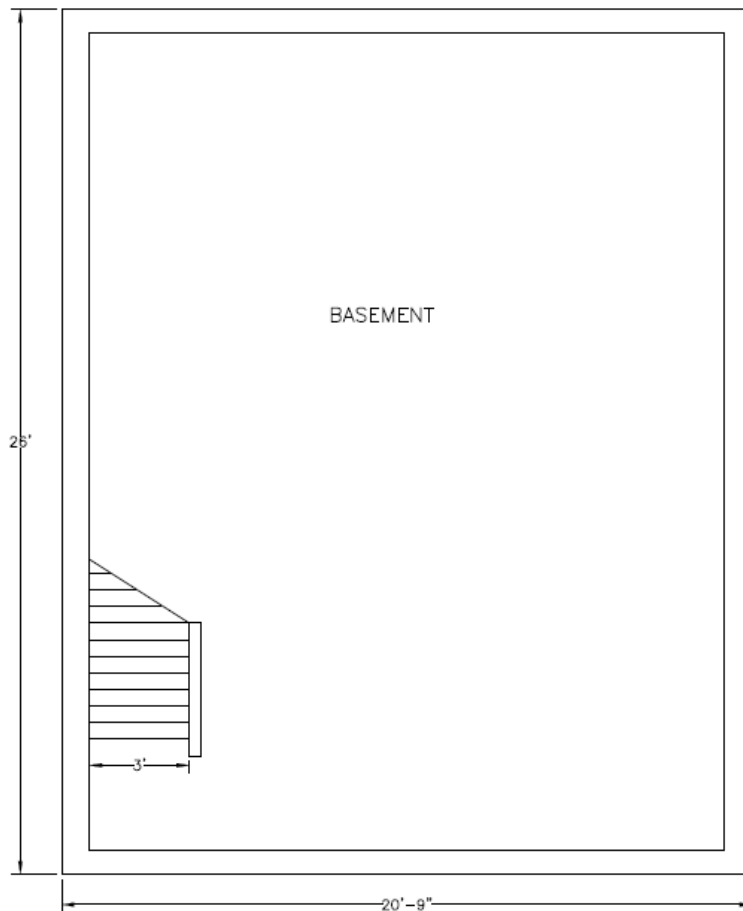


Figure 1 - Typical Basement

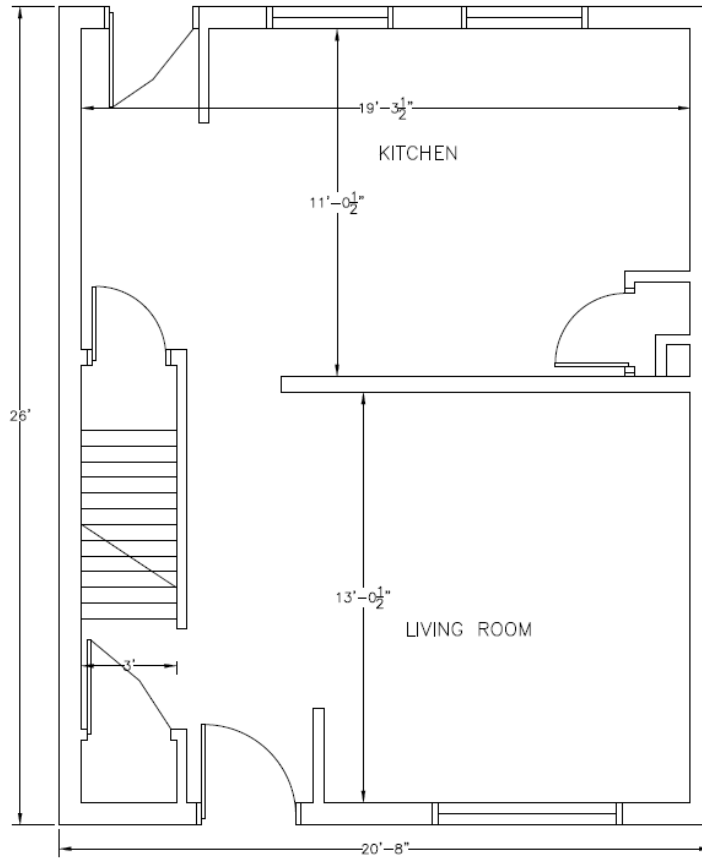


Figure 2 - Typical Main Floor

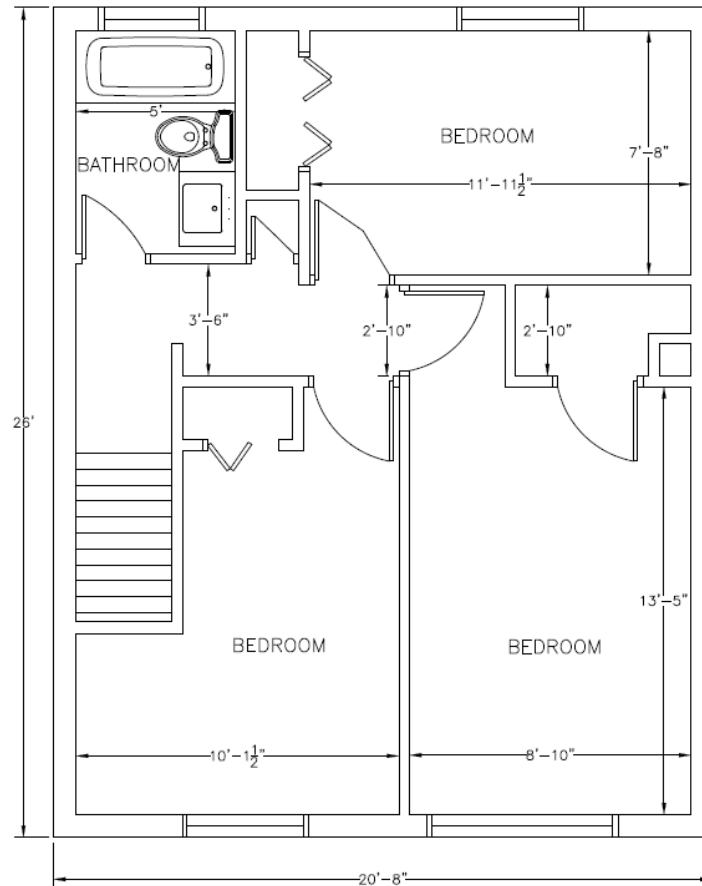


Figure 3 - Typical Second Floor