

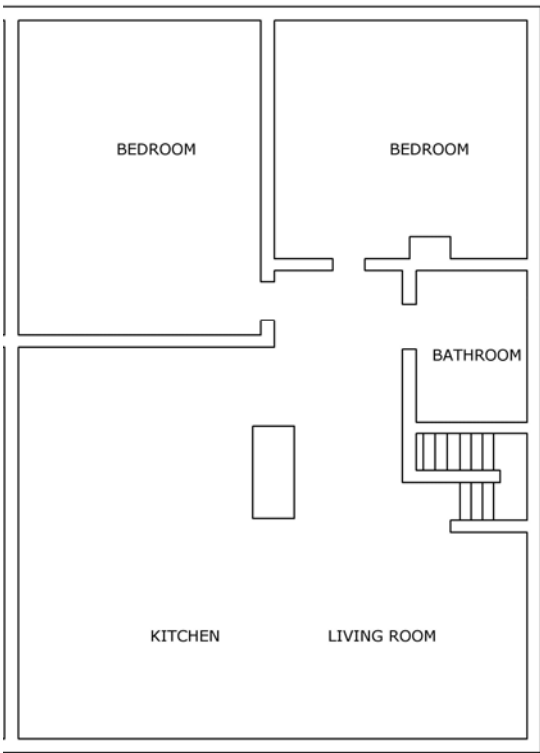
## PROJECT PROFILE – BIRCH DRIVE, EAR FALLS

Owner of Project	Kenora District Services Board (KDSB) – Housing Services
Project Name	Birch Drive
Location/ Address	42, 44, 46, 47, 48, 49, 50, 51, 52, 53, 54, 56, 58, 59, 60, 61, 78, 80, 82 & 84 Birch Drive, Ear Falls ON P0V 1T0
Number of Units	20 (4 – 2 bedroom, 14 – 3 bedroom & 2 – 4 bedroom)
Date constructed	1976
Building Type	1 Storey – Semi - detached
Tenant Type	Family / Rent-gearred-to-income
Market Units	N/A
Modified Units	N/A
Supports	N/A
Assistive Items	N/A
Elevator/Elevator lift	N/A
Heat Type (Suites)	Natural gas forced-air furnace or Hydronic forced-air heating, complete with heat recovery ventilator (HRV)
Heat (Tenant or landlord)	Tenant
Cooling (Suites)	N/A
Electric (Tenant or Landlord)	Tenant
Electric Service Provider	Hydro One
Natural Gas Service Provider	Union Gas
Water (Tenant or landlord)	Tenant
Water Source (Municipal or Well)	Municipal – Town of Ear Falls
Sanitary Sewer (Municipal or Septic)	Municipal – Town of Ear Falls
Television / Internet (Tenant or Landlord)	Tenant – Shaw & Bell
Police	Ontario Provincial Police Services
Fire	Town of Ear Falls
Fire Protection	Smoke alarms in units
Ambulance	Northwest EMS
Fridge and Stove	Supplied by tenant
Laundry	Hook-ups in units, tenant supplied machines
Garbage & Recycle (Pick up or bins)	Municipal curb side pick up
Parking (included or not included)	Single lane asphalt or gravel drive provided for each unit.
Geographic Area	District of Kenora

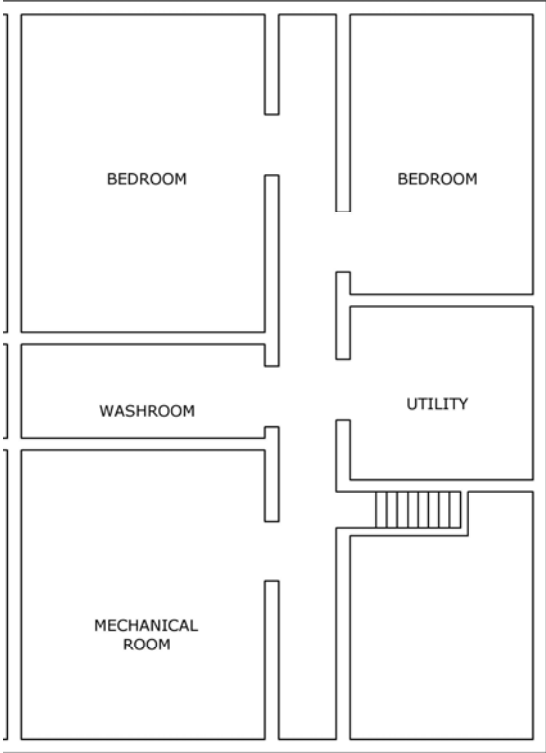
**Exterior Photograph**



**Typical Floor Plan**



**Figure 1 - Typical Main Floor**



**Figure 2 - Typical Basement**